

The Elms Uppingham

There's no place like home

Putting customers first

Building homes is what Longhurst Group do, and we do it exceptionally well across the Midlands and beyond. Over a number of years, we've seen what people really like about the homes we build and we build on that experience.

So you know that behind the kerb appeal, there's a structure that meets the highest professional standards. You know that every detail has been checked and inspected. That's experience!

Finally, **location, location, location**. You will see, we try to find the very best spot for every taste, as we believe in quality homes, in quality places.

Home is a place for everything

Your home should fit around your life. So whether you're a budding chef, artist or just like to relax, you'll find room for whatever you're passionate about.

Home is for making memories

Your home is your haven. From the minute you unlock your front door, a new chapter in your life begins.

Home is where your family grows

From baby to young adult, having a space in which your family can grow together is so important. That's why we build more than just homes.

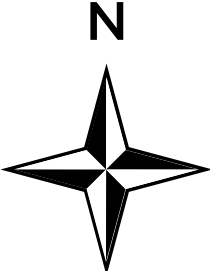
Home is a warm place

Whether you're curling up on the sofa or having a family meal, your home will keep you warm and content all year round.

Homes built to last

There's no feeling like stepping into your new home. Whatever your plans are for tomorrow, we build our homes with a long and happy future in mind.

The Elms, Uppingham

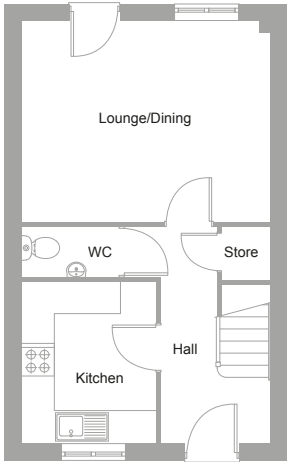


KEY

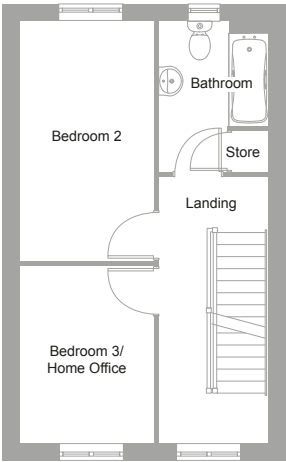
-  The Oakleigh
-  The Alder
-  The Berry
-  The Rowan
-  The Willow
-  The Douglas



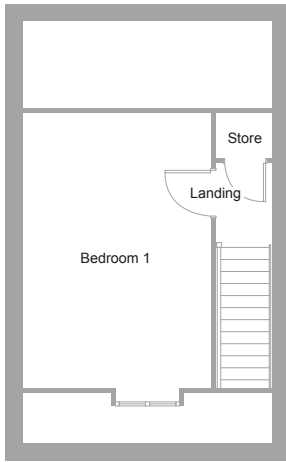
The Oakleigh



Ground Floor



First Floor



Second Floor

Lounge/Dining

4.5m x 3.71m
14'8" x 12'2"

Kitchen

2.98m x 2.49m
9'8" x 8'2"

Bedroom 1

5.12m x 3.47m
16'8" x 11'4"

Bedroom 2

4.41m x 2.49m
14'5" x 8'2"

Bedroom 3 / home office

3.26m x 2.49m
10'7" x 8'2"

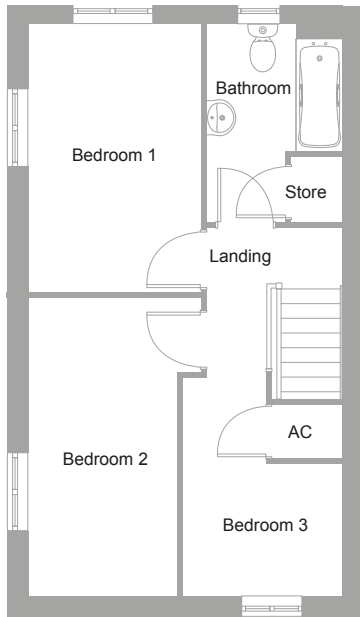
All dimensions are maximum sizes



The Alder



Ground Floor



First Floor

Lounge/dining

3.71m x 4.69m
12'2" x 15'4"

Kitchen

2.65m x 2.98m
8'7" x 9'8"

Bedroom 1

3.99m x 2.62m
13'1" x 8'6"

Bedroom 2

4.48m x 2.62m
14'7" x 8'6"

Bedroom 3

3.29m x 2.16m
10'8" x 7'10"

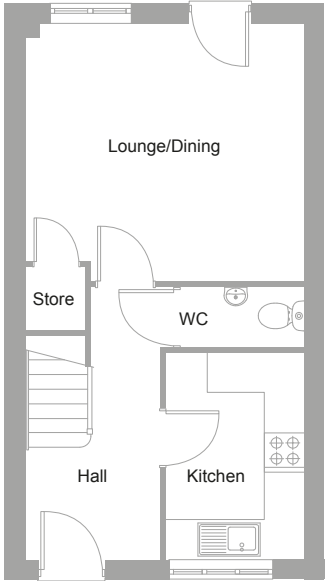
All dimensions are maximum sizes

This information is intended for illustration purposes only and may be subject to change for reasons beyond our control. Each property shown may not include the features as described in the illustration or specification and the floor plans are not to scale. Dimensions supplied are accurate to within +/- 50mm (+/- 2") they are not intended to be used for carpet sizes, appliance spaces or items of furniture spaces. As a consequence this brochure should be used for guidance only and cannot be relied on to accurately describe any Specified Matters as prescribed by an Order made under the Property Misdescriptions Act 1991, nor constitute a contract, part thereof or warranty.

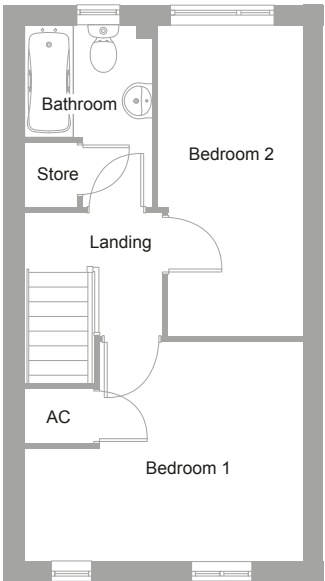
This information is intended for illustration purposes only and may be subject to change for reasons beyond our control. Each property shown may not include the features as described in the illustration or specification and the floor plans are not to scale. Dimensions supplied are accurate to within +/- 50mm (+/- 2") they are not intended to be used for carpet sizes, appliance spaces or items of furniture spaces. As a consequence this brochure should be used for guidance only and cannot be relied on to accurately describe any Specified Matters as prescribed by an Order made under the Property Misdescriptions Act 1991, nor constitute a contract, part thereof or warranty.



The Berry



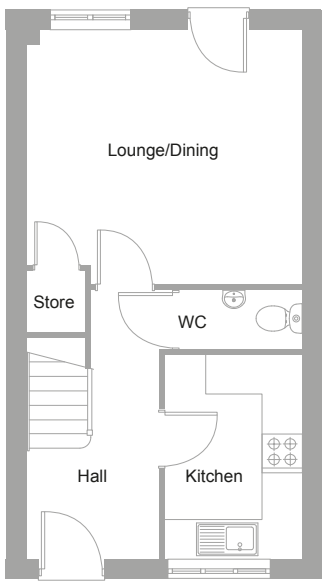
Ground Floor



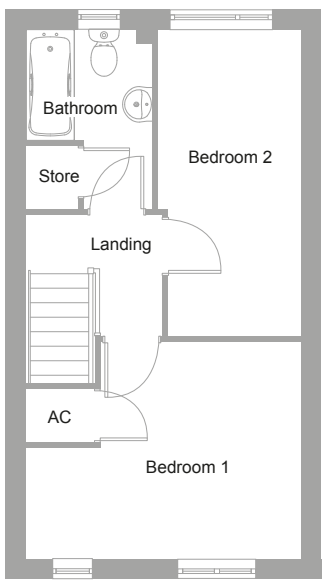
First Floor

Lounge/dining 3.99m x 3.65m 13'10" x 12'10"	Bedroom 1 3.99m x 3.29m 13'10" x 10'8"
Kitchen 2.10m x 3.07m 6'9" x 10'1"	Bedroom 2 2.14m x 4.69m 7'2" x 15'4"
All dimensions are maximum sizes	

The Berry V2



Ground Floor



First Floor

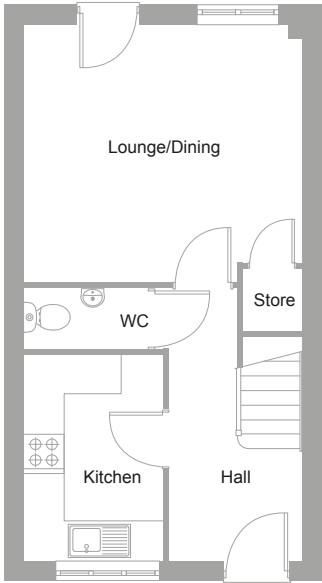
Lounge/dining 3.99m x 3.65m 13'10" x 12'10"	Bedroom 1 3.99m x 3.29m 13'10" x 10'8"
Kitchen 2.10m x 3.07m 6'9" x 10'1"	Bedroom 2 2.14m x 4.69m 7'2" x 15'4"
All dimensions are maximum sizes	

This information is intended for illustration purposes only and may be subject to change for reasons beyond our control. Each property shown may not include the features as described in the illustration or specification and the floor plans are not to scale. Dimensions supplied are accurate to within +/- 50mm (+/- 2") they are not intended to be used for carpet sizes, appliance spaces or items of furniture spaces. As a consequence this brochure should be used for guidance only and cannot be relied on to accurately describe any Specified Matters as prescribed by an Order made under the Property Misdescriptions Act 1991, nor constitute a contract, part thereof or warranty.

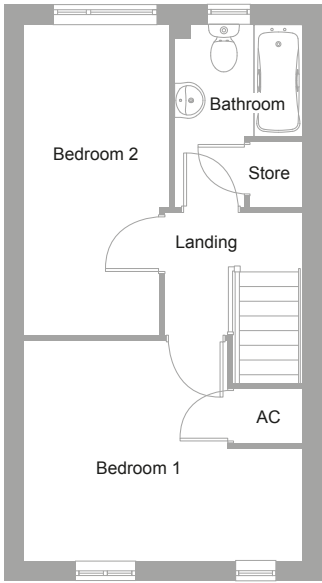
This information is intended for illustration purposes only and may be subject to change for reasons beyond our control. Each property shown may not include the features as described in the illustration or specification and the floor plans are not to scale. Dimensions supplied are accurate to within +/- 50mm (+/- 2") they are not intended to be used for carpet sizes, appliance spaces or items of furniture spaces. As a consequence this brochure should be used for guidance only and cannot be relied on to accurately describe any Specified Matters as prescribed by an Order made under the Property Misdescriptions Act 1991, nor constitute a contract, part thereof or warranty.



The Rowan



Ground Floor



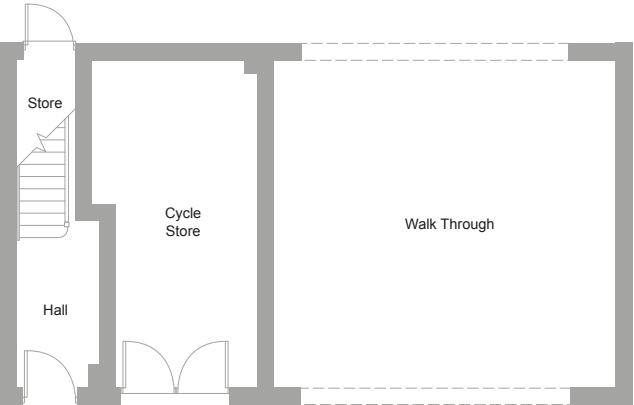
First Floor

Lounge/dining 3.99m x 3.65m 13'10" x 12'10"	Bedroom 1 3.99m x 3.29m 13'10" x 10'8"
Kitchen 2.10m x 3.07m 6'9" x 10'1"	Bedroom 2 2.14m x 4.69m 7'2" x 15'4"
All dimensions are maximum sizes	

This information is intended for illustration purposes only and may be subject to change for reasons beyond our control. Each property shown may not include the features as described in the illustration or specification and the floor plans are not to scale. Dimensions supplied are accurate to within +/- 50mm (+/- 2") they are not intended to be used for carpet sizes, appliance spaces or items of furniture spaces. As a consequence this brochure should be used for guidance only and cannot be relied on to accurately describe any Specified Matters as prescribed by an Order made under the Property Misdescriptions Act 1991, nor constitute a contract, part thereof or warranty.



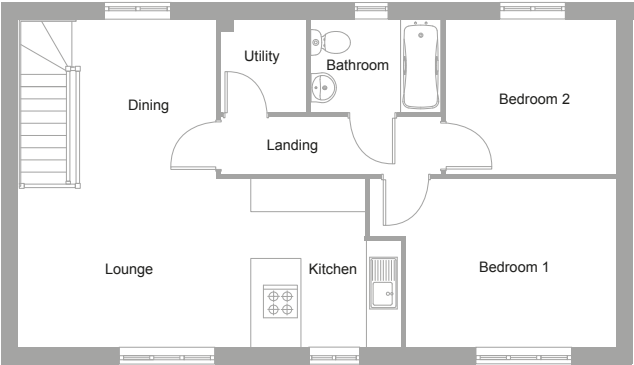
The Willow



Ground Floor

Lounge/Dining	Bedroom 1
5.82m x 4.69m	3.85m x 3.07m
19'1" x 15'4"	12'5" x 10'0"
Kitchen	Bedroom 2
2.62m x 2.98m	2.85m x 3.39m
8'6" x 9'8"	9'35" x 11'15"

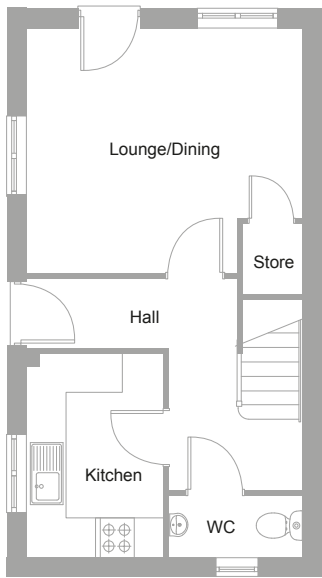
All dimensions are maximum sizes



First Floor

This information is intended for illustration purposes only and may be subject to change for reasons beyond our control. Each property shown may not include the features as described in the illustration or specification and the floor plans are not to scale. Dimensions supplied are accurate to within +/- 50mm (+/- 2") they are not intended to be used for carpet sizes, appliance spaces or items of furniture spaces. As a consequence this brochure should be used for guidance only and cannot be relied on to accurately describe any Specified Matters as prescribed by an Order made under the Property Misdescriptions Act 1991, nor constitute a contract, part thereof or warranty.

The Douglas



Ground Floor



First Floor

Lounge/Dining	Bedroom 1
3.99m x 3.65m	3.99m x 3.29m
13'10" x 12'10"	13'10" x 10'8"
Kitchen	Bedroom 2
2.10m x 3.07m	2.14m x 4.69m
6'9" x 10'1"	7'2" x 15'4"

All dimensions are maximum sizes

This information is intended for illustration purposes only and may be subject to change for reasons beyond our control. Each property shown may not include the features as described in the illustration or specification and the floor plans are not to scale. Dimensions supplied are accurate to within +/- 50mm (+/- 2") they are not intended to be used for carpet sizes, appliance spaces or items of furniture spaces. As a consequence this brochure should be used for guidance only and cannot be relied on to accurately describe any Specified Matters as prescribed by an Order made under the Property Misdescriptions Act 1991, nor constitute a contract, part thereof or warranty.

Our commitment to you

Before you move

- Our friendly sales team will provide you with support and guidance throughout the home buying process
- At pre-reservation stage you will be shown details of the appearance and location of your chosen new home, together with all relevant surrounding information
- The reservation agreement will set out the key terms of your home purchase, including the reservation period, purchase price and other important information
- We will go through the specification and layout of your home and details of any pre-contractual information to enable you to make an informed decision
- We will inform you of your main point of contact who will assist you with information during your reservation and after you have moved into your new home
- We will regularly communicate with you to keep you informed of the progress of your new home and your dedicated point of contact will respond to any queries you may have
- We want to make your move as enjoyable as possible and our welcoming and knowledgeable staff will be with you every step of the way to provide a service that is tailored to you and your needs.

When/after you move in

- On the day you move a dedicated sales advisor will welcome you to your new home
- A detailed homecare booklet will be provided to help you settle in
- Shortly after you have moved in, we will make courtesy calls/visits to ensure you are happy with your new surroundings
- Your new home is covered by an NHBC or similar industry regulated 10-year insurance scheme covering the fabric and structural integrity of your new home.

We do value your comments and feedback so we can continually improve and enhance our service. If you have any comments you'd like to share with us, please contact **0345 601 9095** or newhomessales@longhurst-group.org.uk



For sales enquiries

Longhurst Group Limited

5 The Triangle

Nottingham

NG2 1AE

T: 0345 601 9095

E: newhomessales@longhurst-group.org.uk

longhurst-group.org.uk