



GRAVENEY
MEWS
TOOTING



A MUCH LOVED LOCATION

Graveney Mews is nestled in popular Tooting, just a two-minute walk from the train station. With four gorgeous new apartments for sale through shared ownership, it makes getting on the property ladder here far more affordable.



ALL YOU NEED ON YOUR DOORSTEP

Each apartment comes with a high-quality finish, and access to a private courtyard, terrace or balcony. They also put you conveniently close to the high street. Foodie pub Gorrington Park will be your local, and other neighbourhood favourites such as Mud Café and The Antelope are just a wander away.

You'll also have a variety of green spaces nearby, such as Gorrington Park and Tamworth Recreation Ground – perfect for letting off steam and getting back to nature. And there are several schools within a short walk.

TRAVEL MADE EASY

With great travel options, it's easy to get to central London and attractive neighbouring areas such as Wimbledon and Balham from Graveney Mews. Allocated bike storage facilities help make cycling a convenient way to travel.

Tooting train station is 100m away and goes into London Bridge, and Tooting Broadway tube station is 0.6 miles away. There are also several bus routes locally and the A24 takes you straight into London or out to Surrey.

STYLISH GOOD LOOKS

The sleek architecture at Graveney Mews promises big things, and the interiors don't disappoint with an array of design-led fixtures and fittings.

KITCHEN

- ▷ Howdens Glendevon gloss white units
- ▷ Howdens white and grey marble-look worktop
- ▷ Stainless steel sink and tap
- ▷ Integrated fridge freezer and dishwasher
- ▷ Ceramic black hob and stainless steel oven
- ▷ Gloss white porcelain splash back
- ▷ Glass and stainless steel extractor
- ▷ Luxury wood effect flooring
- ▷ Spot lighting
- ▷ Washer / Dryer

BATHROOM / EN SUITE

- ▷ White bath, basin and close-coupled WC
- ▷ Basin-width mirror
- ▷ Chrome taps and shower fitting
- ▷ Glass shower screen or cubicle
- ▷ Chrome electric towel rail
- ▷ Shaver socket
- ▷ Porcelain beige wall and floor tiles
- ▷ Spot lighting

LIVING/DINING AREA & HALL

- ▷ Luxury wood effect flooring

BEDROOM

- ▷ Primo Plus carpet in Cloudy Bay

ELECTRICS AND HEATING

- ▷ A-rated boiler
- ▷ Double convector radiators
- ▷ White electrical face plates
- ▷ Low-energy pendants throughout
- ▷ Smoke and heat detector
- ▷ Voice entry system

PAINTWORK AND IRONMONGERY

- ▷ Walls and ceilings – white emulsion
- ▷ Woodwork – white satinwood
- ▷ White, painted, flush internal doors
- ▷ Satin steel ironmongery

EXTERNAL

- ▷ Aluminium windows and external doors
- ▷ Glass and stainless steel balcony
- ▷ Softwood decking
- ▷ SkyQ ready
- ▷ Bicycle Storage
- ▷ No Parking available

APARTMENT 1

Ground floor

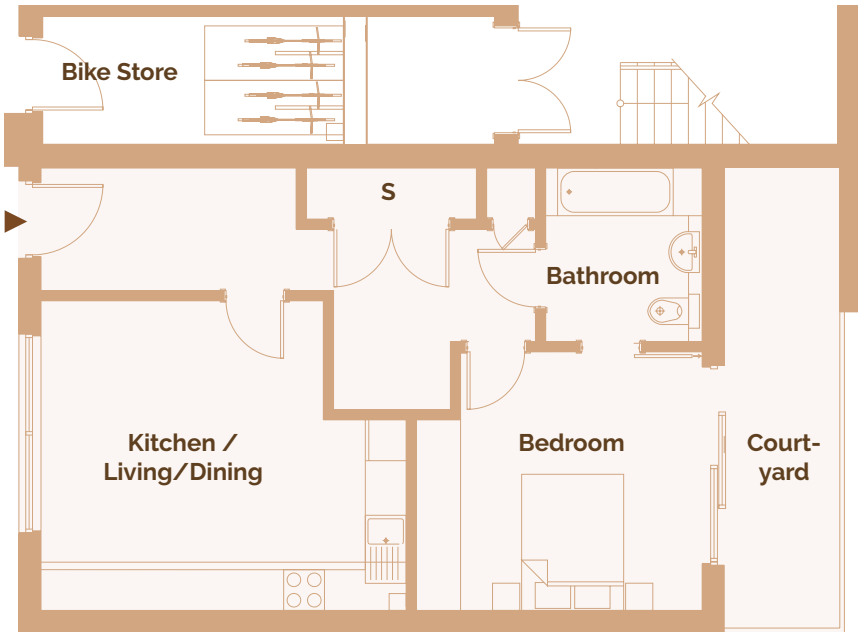
1 BED

63.7 m²

Kitchen/Living/Dining	4.60m x 5.41m
Bedroom	3.85m x 4.25m
Bathroom	2.60m x 2.35m



▲ = Apartment entrance



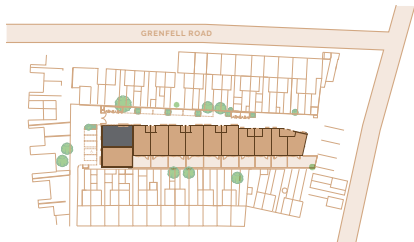
APARTMENT 2

Ground floor

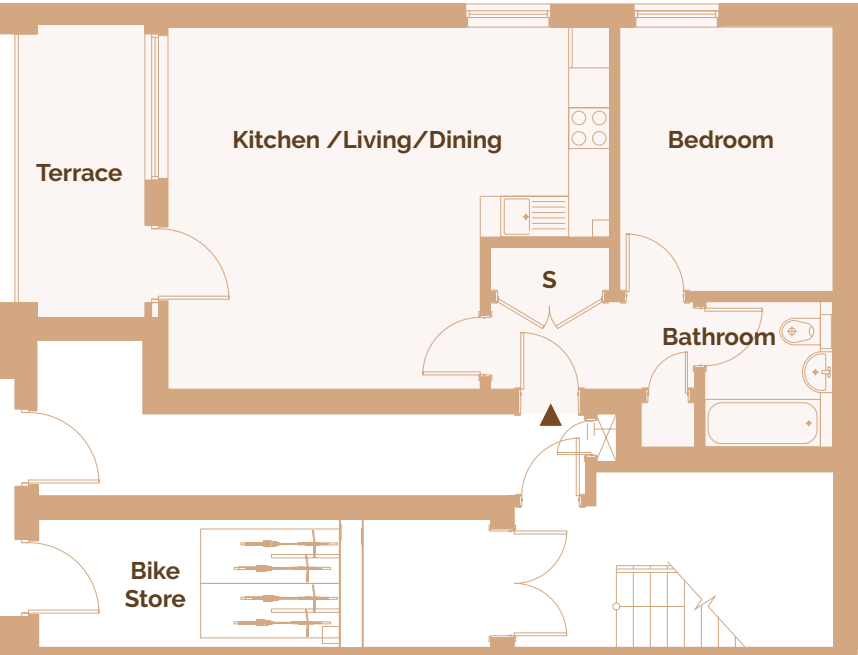
1 BED

54.6 m²

Kitchen/Living/Dining	5.32m x 6.56m
Bedroom 1	3.95m x 3.20m
Bathroom	2.12m x 1.72m



▲ = Apartment entrance



APARTMENT 3

First floor

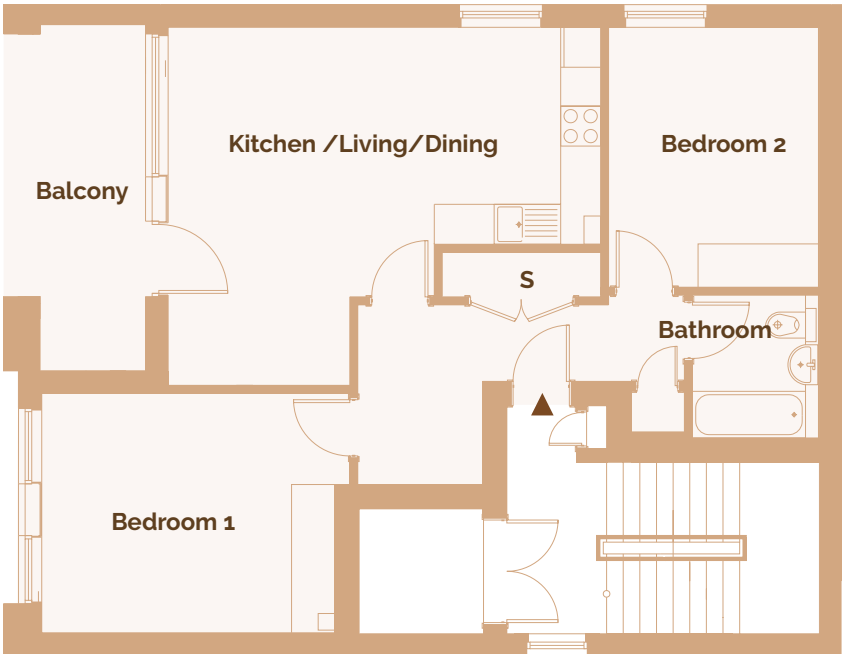
2 BED

74.3 m²

Kitchen/Living/Dining	5.44m x 6.54m
Bedroom 1	3.61m x 4.41m
Bedroom 2	3.85m x 3.21m
Bathroom	2.18m x 1.71m



▲ = Apartment entrance



APARTMENT 4

Second floor

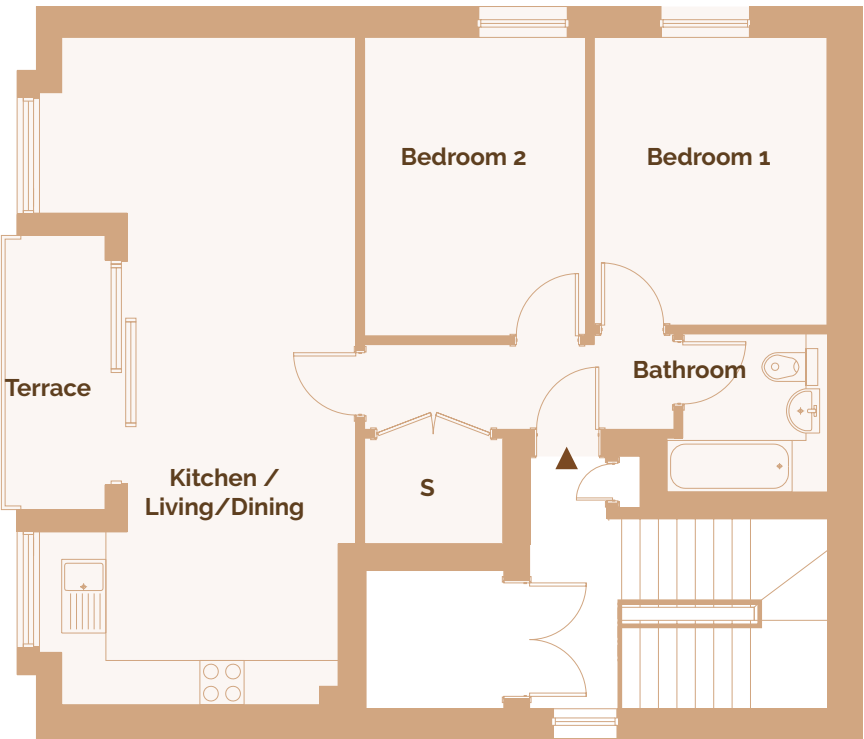
2 BED

71.6 m²

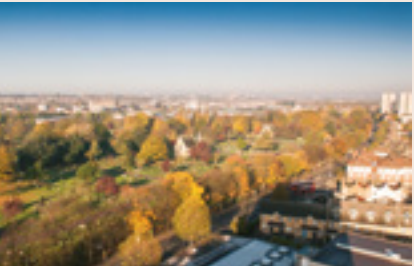
Kitchen/Living/Dining	9.16m x 4.04m
Bedroom 1	3.96m x 3.37m
Bedroom 2	4.03m x 3.03m
Bathroom	2.09m x 2.29m



▲ = Apartment entrance



Location & Site Plan



*All dimensions are taken to the maximum point where applicable



SHARED OWNERSHIP MAKES YOUR DREAM LOCATION A REALITY

When you buy a property through a shared ownership scheme,
you buy a share in your home and pay a subsidised rent on the remaining share.

You're then able to buy more shares, if you choose to, when you can afford it.
It's called staircasing and the rent on your home goes down as you buy more shares.
Eventually, you may own your home outright and not pay rent at all.

Contact us

www.graveneynews.co.uk

0330 113 3701

